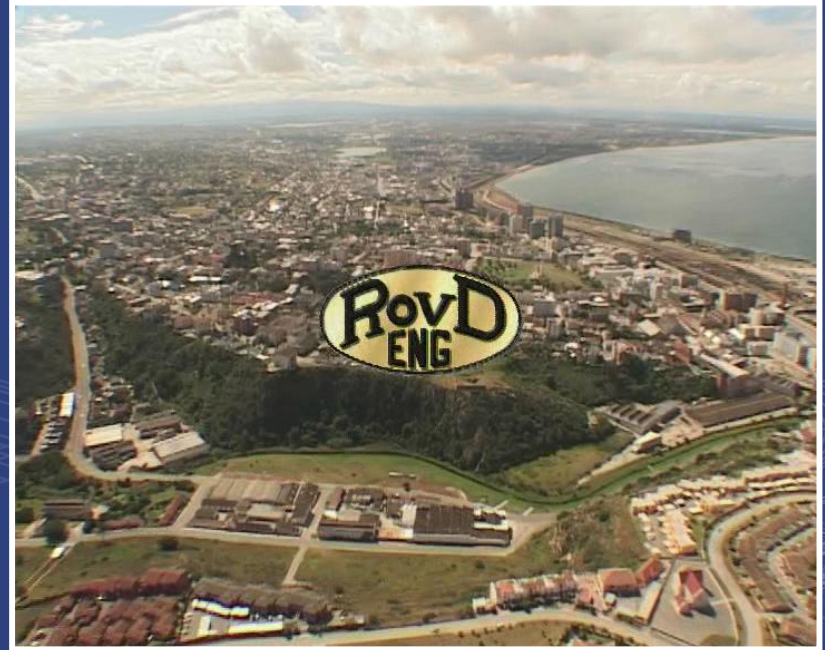




MODERN MECHANIZED SALT HARVESTING IN SOUTHERN AFRICA



About our company





Salt industry projects

- Sea Water Pumps



- Iodide Mixers



- Salt wash Plants

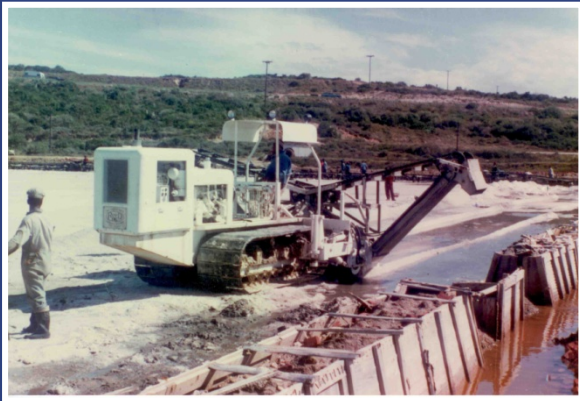


- Salt Harvesters





Starting from first harvesters





← 400 TPH Harvester

750 TPH Harvester →



Major areas of interest in a harvester

- Cutter Drum (pick roll)
- Chassis



- Elevator



- Cab





- Control System





Cutter drum

The pick roll



Pick holders with picks
and scroll plates installed





Cutter tips

Mounting Block

Cutting Tips

Chisel tip

General
purpose tip for
high-impact

Medium-impact
tip

High
penetration
tip





Scroll plates

- Designed to direct the flow of salt particles

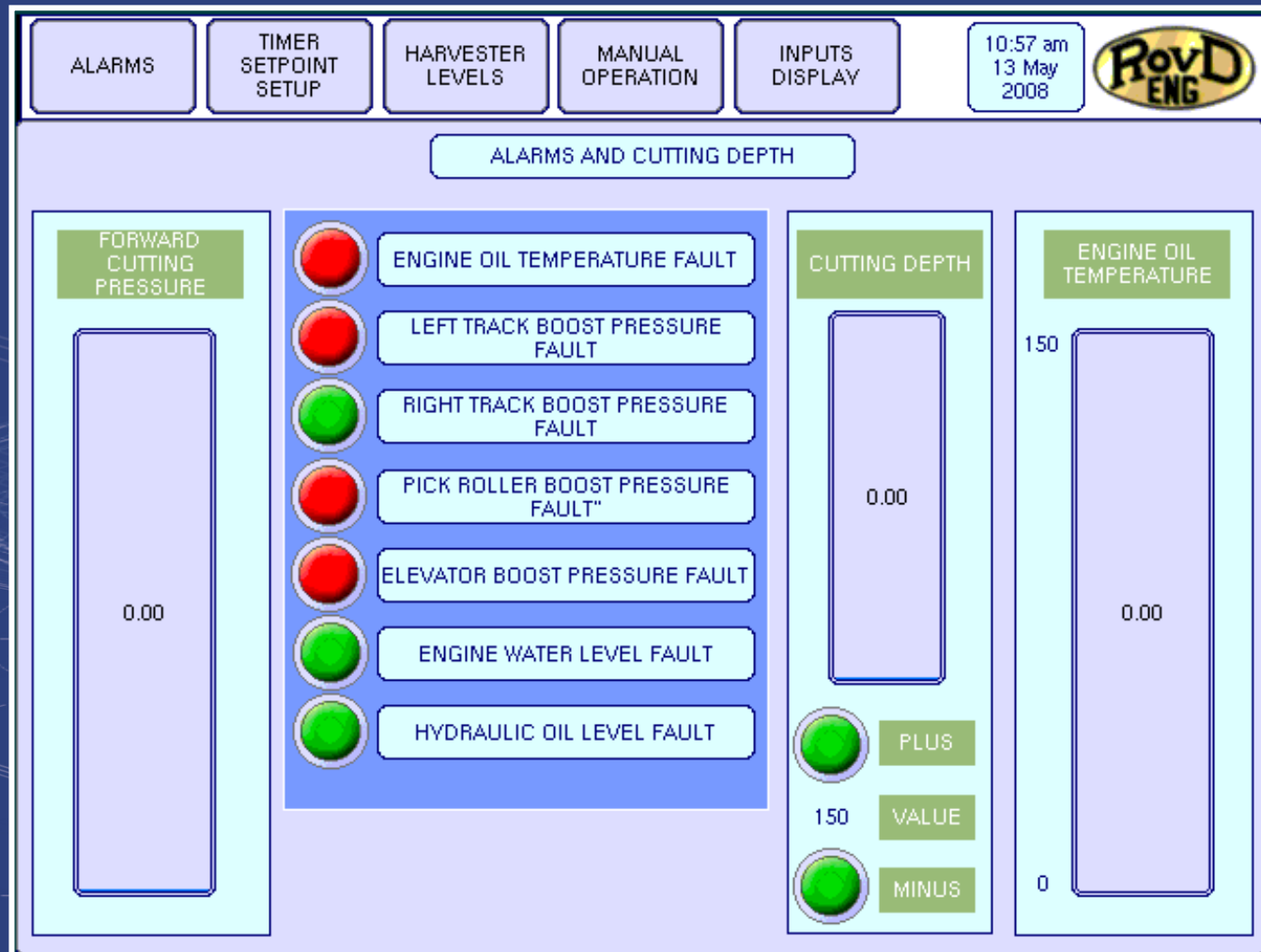




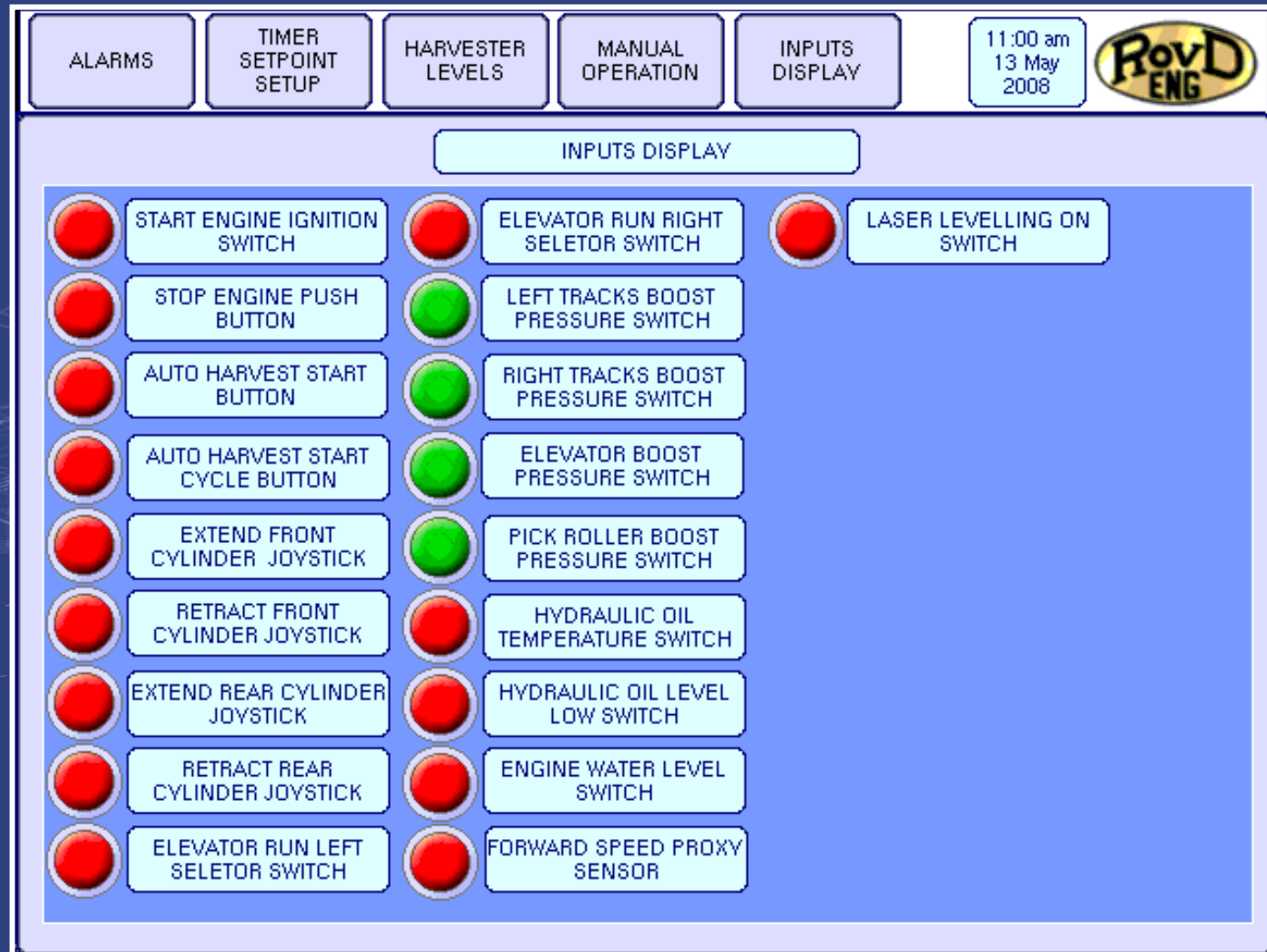
Hydraulic motor for pick roll



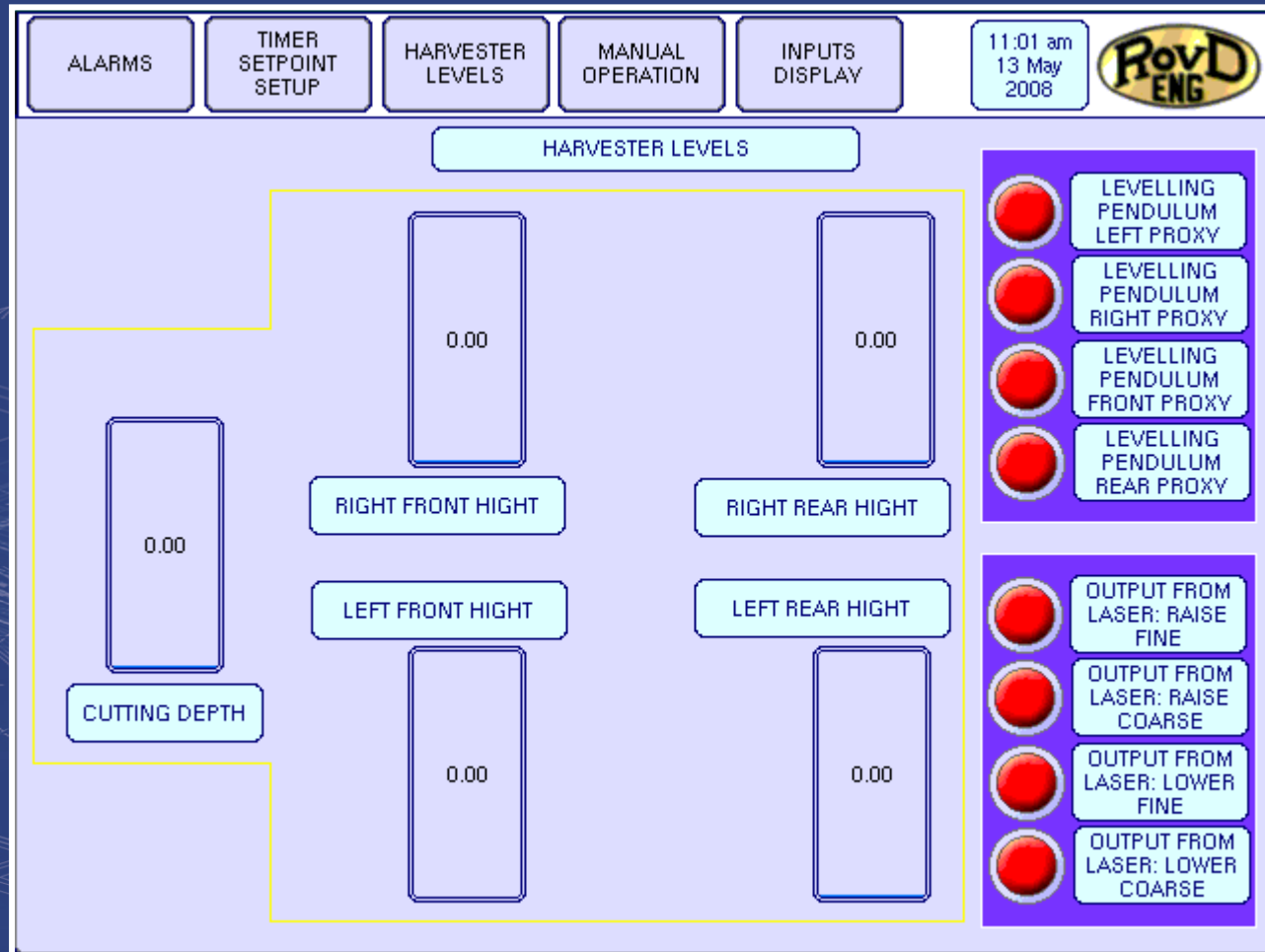
Alarms and cutting depth on touch screen monitor



Inputs display on touch screen monitor

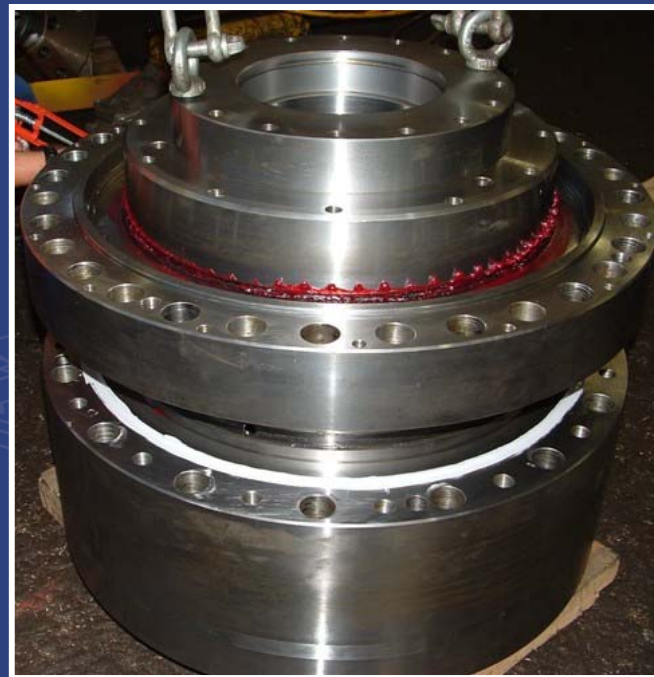


Harvester levels on touch screen monitor



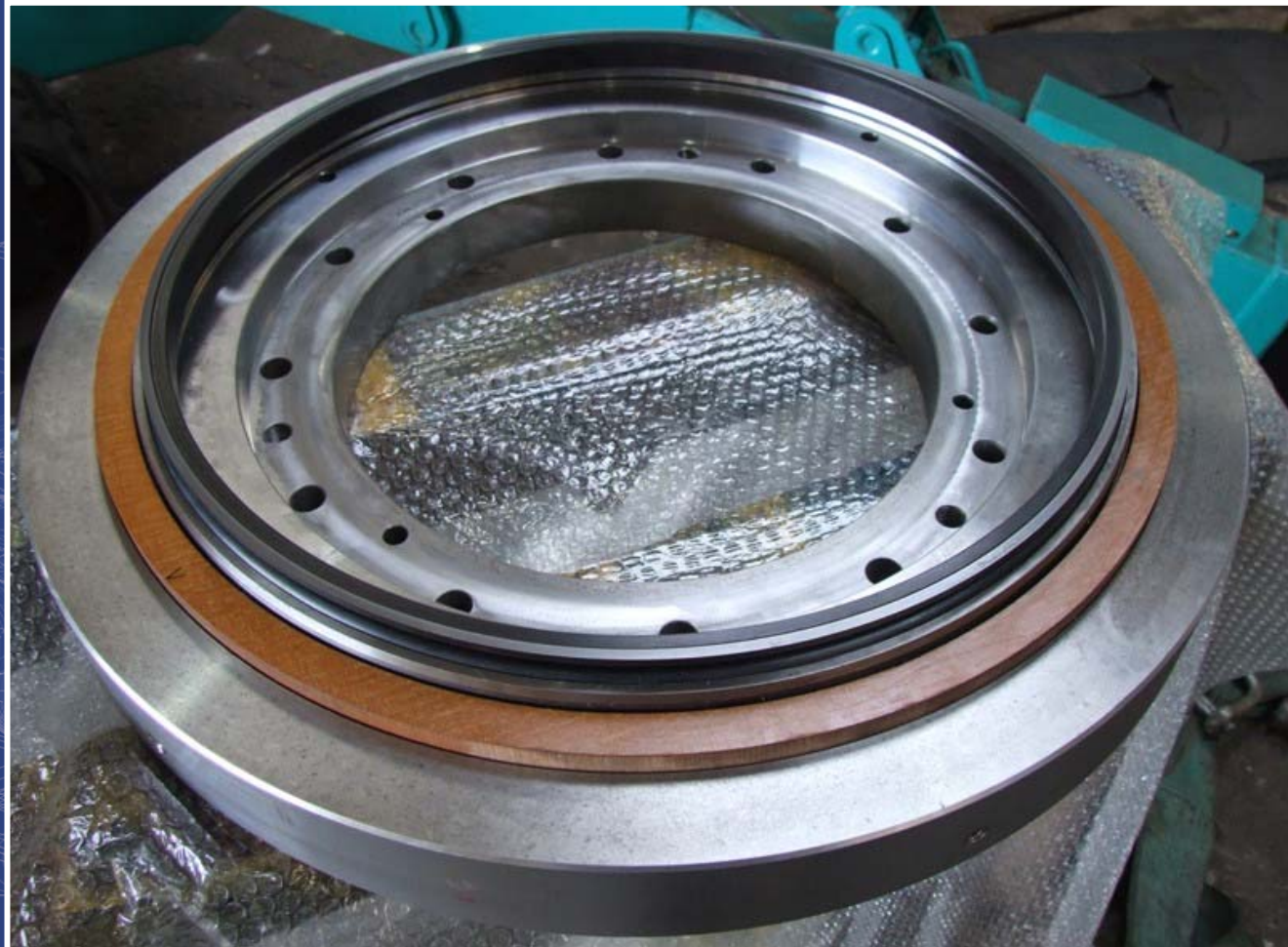


Self-aligning spherical roller bearings for the pick roll being assembled





'Du-cone' Seal





Elevator Section



- Elevator loading salt into Truck





Elevator section with buckets





Elevator loading salt



Chassis being prepared





Completed chassis





Stainless steel sections

Engine cover

Cab section



Cab

- Top of cab with overhead gauges





Digital display to monitor harvester



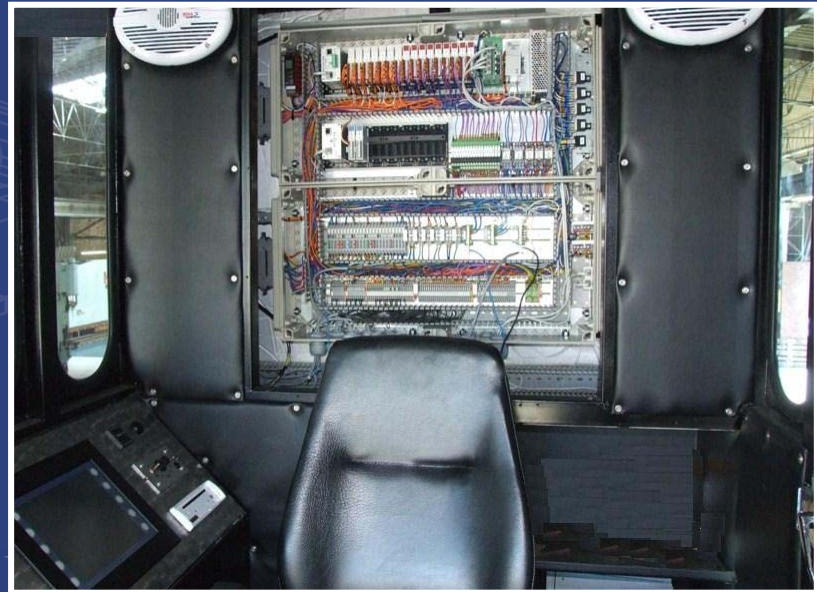


Control System

Panel covering
PLC on



Panel removed
for access to PLC



Laser system

Control-panel inside harvester that works in conjunction with laser tower



Signal transmitted from laser tower used to maintain cutting depth on harvester



Output terminology





Trailers used for carting of salt

Bottom-dump
trailer



Conventional
rear-tipper





Harvester awaiting trailers before continuing harvesting operations





Harvesting Method

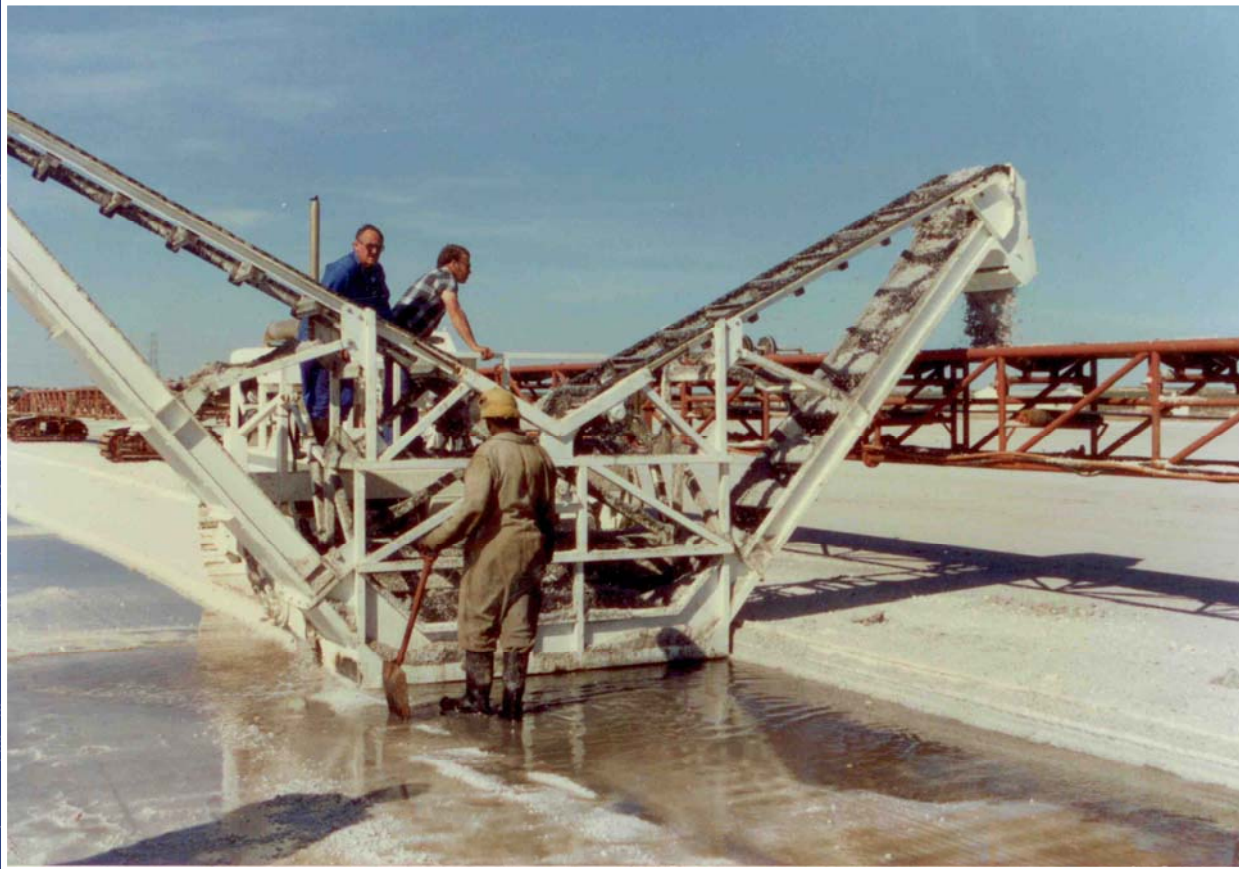
- Use of a bulldozer to harvest salt
- Use of a front end loader
- Use of a harvester



- Loading salt into trailer



- Harvester loading salt onto conveyor

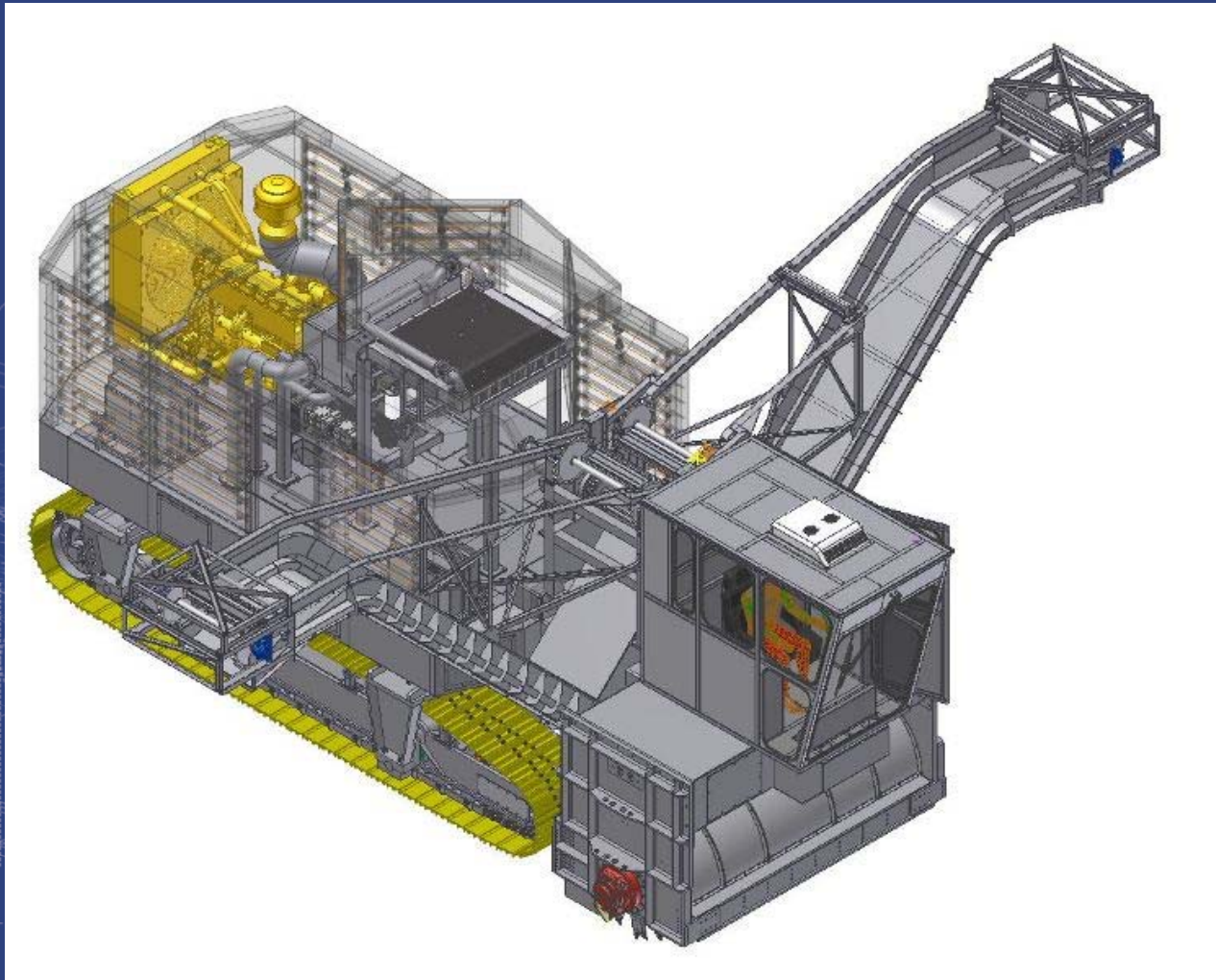




- Trailed harvester



Conclusion



Contact details

- Email us at: info@rov.co.za
- Phone number: +27414532530